

# COMPANY PROFILE

**SIGNTECH**  
TECHNOLOGY  
YOUR TRUSTED COOLING PARTNER



VRF | CHILLER | VENTILATION  
DUCTED TYPES | RAC  
LIGHT COMMERCIAL  
CLEAN ROOM

AUTHORIZED DISTRIBUTOR  
**SAMSUNG**

## ABOUT US

Signtech Technology Limited is one of the leading Heating and Ventilation Air Conditioning (HVAC) Company in Bangladesh and Authorized Distributor of Samsung. We offer broad range of energy efficient, HVAC Consultancy, humidifying, air cooling products service and parts support, advanced building controls and nursing solutions.

Our systems and services have leading positions in premier commercial, residential and industrial market, a reputation for reliability, high quality and powerful distribution network. Our product range has VRF, Chiller, Rooftop package unit, Duct type and split type air conditioner

We control the comfort of the air for people in home and may of the commercial, industrial and institutional buildings and we are applying our experience in environmental technology and energy consumption to make a difference in energy efficient.

## AUTHORIZATION CERTIFICATE

**SAMSUNG**

SAMSUNG INDIA ELECTRONICS PVT. LTD  
Bangladesh Branch Office  
Simpletree Anarkali (5<sup>th</sup> Floor)  
89, Gulshan Avenue, Gulshan  
Dhaka-1212, Bangladesh

**TO WHOM IT MAY CONCERN**

Date: 12 March 2025

This is to certify and declare that **SIGNTECH TECHNOLOGY**, Address: Corporate Office: 56/1, Baitul view Tower, Purana palton Dhaka-1000 and Register office: L- Mallick Complex 5th Floor, 12 Purana Palton Dhaka, Bangladesh is the authorized distributor of **SAMSUNG INDIA ELECTRONICS PVT. LTD.** in Bangladesh for the Samsung Branded products as listed below:

1. SAMSUNG SYSTEM AC/ DVMty/ VRF

This Certificate is valid till 11<sup>th</sup> March 2026.

With Best Regards,

  
**JUNG MIN JUNG**  
Country Manager  
SAMSUNG INDIA ELECTRONICS PVT. LTD



Registered Office: Samsung India Electronics Pvt. Ltd. 20<sup>th</sup> - 24<sup>th</sup> Floor, Two Horizon Centre, Golf Course Road, Sector 43, DLF Phase-V, Gurgaon 122002, Haryana, India

202503121412136

# SAMSUNG

Samsung is a South Korean multinational conglomerate headquartered in Samsung Town, Seoul. It comprises numerous affiliated businesses., most of them united under the Samsung brand, and is the largest South Korean chaebol (business conglomerate). Samsung was founded by Lee Byung-chul in 1938 as a trading company.

The Samsung HVAC Business Unit is a provider of total HVAC solution. As a true total HVAC provider. Samsung supplies the largest buildings, hospitals and industrial facilities with central air conditioning systems.



Principal 100 Shopping Complex  
Mograpara, Narayangan, Bangladesh



Mall of Istanbul The Residence  
Istanbul, Turkey



Seoul National University Hospital  
Seoul, Korea



# WHY CHOOSE SIGNTECH



## Product Quality

1. Proudly represents the globally renowned Samsung brand
2. Utilizes premium-grade accessories to ensure superior performance.
3. Having the biggest stock of VRF units of Samsung Brand



## 360° After-Sales Service

1. Call center based service
2. 24/7 call service
3. Zone wise service team



## Experience

1. More than 10 years of experience
2. Successful completion of more than 120+ projects
3. Having experience of working in multiple sectors



## Team Strength: Individual Design & Execution Team

1. Team comprises potential manpower
2. Providing smart, cost-effective & detailed HVAC Design
3. Ability & tendency to provide proper, accurate & required solution
4. Skilled & experienced group of engineers for project implementation and supervision



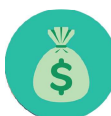
## Long Term Relationship

- Working in numerous repeated projects of our clients  
Work for building faith of the client on us by providing proper support



## Professionalism

1. Always fulfill the commitment with client
2. Follows strict code of ethics and accountability for actions



## Financial Potency

1. Signtech Technology is the one the largest corporate houses in Bangladesh
2. Strong and stable financial foundation.
3. Capable of funding large-scale projects.



# OUR SOLUTIONS

## Variable Refrigerant Flow (VRF)

The DC Inverter System optimizes energy use based on demand. VRF HVAC systems connect multiple indoor and outdoor units for zoned heating and cooling, modulating capacity to enhance comfort and reduce waste.



## Refrigerant-R410

R-410A is a high-efficiency HFC refrigerant with zero ozone depletion, operating at higher pressures than R-22, requiring compatible components and trained handling.

## Chiller

Heat source machines are vital for factories, supermarkets, hospitals, and offices, preventing heat buildup in machinery. They are widely used for chilled water and low-temperature applications in manufacturing.



Water Cooled Chiller



Air Cooled Chiller

## Mini Chiller

The mini-chiller with R-410A offers cooling-only and heat pump options. Its inverter control boosts efficiency, while single-phase power and low starting currents make it ideal for homes.



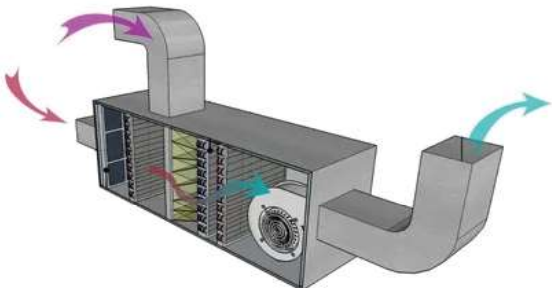
## Cooling Tower



A cooling tower is a heat rejection device that cools water by evaporating a small portion of it. It is used in industrial, commercial, and HVAC applications to remove excess heat from systems like air conditioning or manufacturing processes, ensuring efficient operation and preventing overheating.

## Air Handling Unit (AHU)

An Air Handling Unit (AHU) circulates and reconditions air in HVAC systems, enhancing indoor air quality and efficiency. It regulates airflow with dampers and includes heat/cooling recovery exchangers to optimize energy use.



# OUR SOLUTIONS

## Ducted Split Air Conditioner



Ducted split AC provides heating and cooling through ducts, with a central unit in the attic, basement, or garage. It ensures efficient climate control by distributing conditioned air via vents.

A dehumidifier is an air conditioning device that reduces and maintains humidity levels for health, comfort, and odor control. It prevents mildew by extracting moisture and is used in household, commercial and industrial applications.



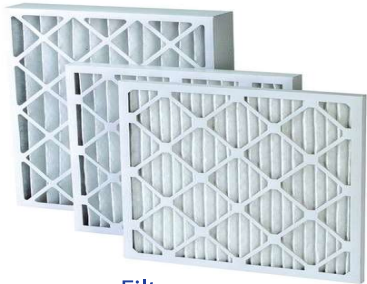
Rooftop Packaged Air Conditioner

## Rooftop Packaged Air Conditioner

A rooftop air conditioner is a self-contained unit installed on commercial rooftops for cooling, heating, or both. It's ideal for departmental stores, cinemas, and supermarkets.

## Filters

Filters are used to clean supply air, with types like pre-filters, bag filters, and HEPA filters depending on air purification needs.



Filters

## Clean Room



A specialist in the field of Clean room Air Filtration Components with a wide range of particulate HEPA and ULPA filters and Chemical Filters to meet your requirements with respect to clean air.

## Cold Room

Cold rooms are used for the storage of large quantities of materials and products, and for certain procedures that need to be performed at low temperatures. We supply cold rooms.

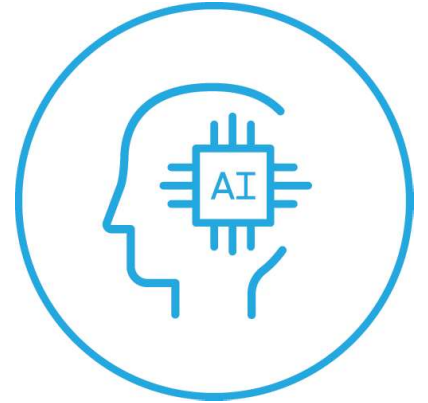


# PRODUCT RANGES OF VRF WITH KEY FEATURE



DVM S2  
22.4 - 95.2 KW  
8 HP - 32 HP

- Active AI Technologies
- Advanced Flash Injection Compressor
- WindFree™ Cooling Compatibility
- Active Frequency Drive (10Hz)
- Extended Piping Length
- On-device Inverter Check™
- High Energy Efficiency
- Wide Operating Temperature Range
- Compact Design with High Capacity
- Auto leak Detection Technology
- Auponational Data Analysis




**360° CASSETTE**  
4.5 - 14.0 KW

- Bladeless Design
- Omnidirectional Airflow
- Air Purification Panel
- Smart Control
- Customizatable Design
- Energy Efficiency



**4 WAY CASSETTE**  
2.2 - 17.0 KW

- WindFree™ Cooling
- Individual Blade Control
- Motion Detection Sensor
- Compact and Lightweight
- Aesthetic Panel Options
- Air Purification



**1 WAY CASSETTE**  
2.2 - 7.1 KW

- WindFree™ Cooling
- Compact Design
- Efficient Drainage
- Energy Efficiency
- Smart Controll
- Advanced Air Filtration



**2 WAY CASSETTE**  
5.6 - 7.1 KW

- Compact and Slim Design
- Powerful Dual-Sided Airflow
- Optimum Temperature Control
- Ceiling Dust Prevention
- High Lift-Up Drain Pump
- Quiet Operation



**CEILING TYPE**  
5.6 - 14.0 KW

- WindFree™ Cooling
- High Elevation Installation
- Compact and Slim Design
- Efficient Cooling Performance
- Quiet Operation
- Smart Connectivity



**WALL TYPE**  
2.2 - 8.2 KW

- WindFree™ Cooling
- AI Auto Comfort
- Compact and Sleek Design
- Easy Maintenanc
- Advanced Air Filtration
- Seamless Integration

## PRODUCT RANGES OF VRF WITH KEY FEATURE



**HSP DUCT**  
11.2 - 28.0 KW

- High External Static Pressure (ESP) Capability
- Vapor Injection Technology
- Electronic Expansion Valve
- Dual Sirocco Fans
- Lift-Up Drain Pump
- Long-Life HD 40 Filter



**MSP DUCT**  
2.2 - 16.0 KW

- High External Static Pressure
- Smart Pressure Control
- Compact Design
- Quiet Operation
- High Lift-Up Drain Pump
- Wide Capacity Range



**SLIM DUCT**  
2.2 - 14.0 KW

- Ultra-Slim Profile
- Flexible Air Inlet Options
- Easy Maintenance
- Quiet Operation
- Compact & Efficient
- Easy Maintenance



**CONCEALED FLOOR STANDING**  
3.6 - 5.6 KW

- Space-Saving Design
- Vapor Injection Technology
- Quiet Operation
- Flexible Airflow Options
- Easy Maintenance
- Smart Connectivity



**ERV PLUS**  
3.6 - 7.1 KW

- Direct Expansion (DX) Coil Integration
- High-Efficiency Heat Recovery
- Intelligent CO<sub>2</sub> and Humidity Sensing
- Self-Cleaning Function
- Smart Connectivity



**OAP DUCT**  
14 - 28.0 KW

- 100% Outside Air Processing
- Energy Recovery Capability
- Advanced Filtration System
- Compact Design
- Flexible Airflow Management
- High Capacity



**PAC**  
14 - 28 KW

- Integrated Design
- High Cooling Capacities
- Energy Efficiency
- Durable Construction
- Easy Maintenance
- Flexible Installation Options



**CONTROL SYSTEM**

- Artificial Intelligence (AI) Optimization
- Advanced Zoning Capabilities
- Remote Access and Monitoring
- Energy Management
- Integration with Building Management Systems

WE PROVIDE DESIGN SOLUTIONS FOR EVERY SPACE

**DVM S2 | WindFree™**  
Digital Variable Multi Compatible



**WORLD'S FIRST ROUND AC**



**WINDFREE COOLING**




**ENERGY SAVING WITH WIND-FREE**



**ENVIRONMENT FRIENDLY**



**AIR PURIFIER: PM 1.0 FILTER**




# UNDERSTANDING YOUR BUSINESS NEEDS

We understand the needs to the different market segments && partner with you to develop & delivery the right systems & services for your success.



COMMERCIAL BUILDING



INDUSTRY



DATA CENTERS



LODGING



FOOD & BEVERAGE



WAREHOUSE



RETAIL



HEALTHCARE



LIFE SCIENCE & BIO TECHNOLOGY



EDUCATIONAL INSTITUTIONS



RESEARCH & LABORATORIES



EVENT & CONFERENCE CENTERS

## SOME OF OUR PROJECTS



### DHAKA MASS TRANSIT COMPANY LTD

Brand : Samsung  
Address: Diabari, Dhaka



### CSD CONVENTION HALL

Brand : Samsung  
Address: Diabari, Dhaka



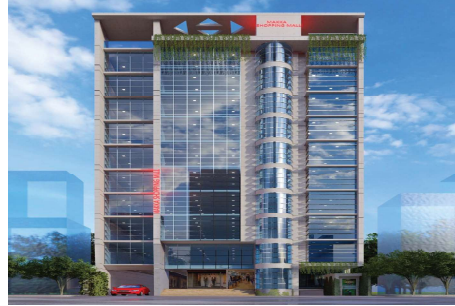
### HEALTH BHABAN.

Brand : Samsung  
Address: Mohakhali, Dhaka.



### KUSHTIA ZILLA PARISHAD SHOPPING COMPLEX

Brand : Samsung  
Address: Boro Bazar, Kushtia



### MAKKAH SHOPPING MALL

Brand : Samsung  
Address: Newmarket, Dhaka



### SB LABROTORIS

Brand : Samsung  
Address: Gash Line, Amchattar, Rajsha-



### SHEBA HOLDINGS LTD

Brand : Samsung  
Address: 60, Palton, Dhaka



### MALABAR GOLD & DIAMONDS IND.

Brand : Samsung  
Address: Malibag, Madanpur, Dhaka



### D&S PRETTY FASHIONS LTD

Brand : Samsung  
Address: Gazipur Salna, Gazipur



### MODEL MOSQUE

Brand : Samsung  
Address: South Surma Sylhet



### RANGS DIOROMA

Brand : Samsung  
Address: Road-32, Gulshan-1, Dhaka



### RAJUK MARKET

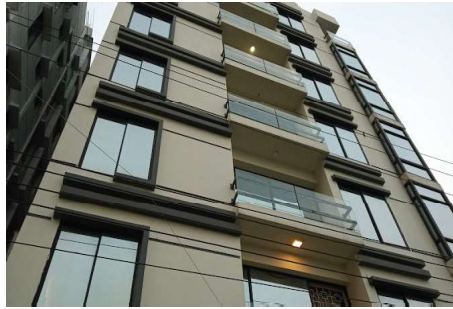
Brand : Samsung  
Address: Uttara, Dhaka

## SOME OF OUR PROJECTS



**PRIME MEDICAL RANGPUR**

Brand : Samsung  
Address: Rangpur shadar



**MBM GROUP**

Brand : Samsung  
Address: Plot # 1358, Road No. 7, Dhaka



**GAWSIA MARKET**

Brand : Samsung  
Address: Newmarket, Dhaka



**AMAN GRAPHICS & DESIGNS LTD**

Brand : Samsung  
Address: Nazimnagar, Hemayetpur,



**CHANDNI CHAWK SHOPPING MALL**

Brand : Samsung  
Address: Newmarket, Dhaka



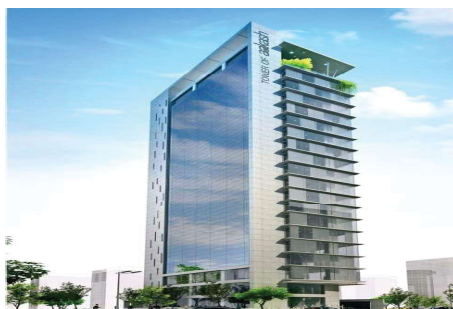
**RUPAYAN SAPNO NILOY**

Brand : Samsung  
Address: Shanti Nagar, Dhaka



**BOMBAY SWITS**

Brand : Samsung  
Address: Jhigatala, Dhanmondi, Dhaka



**AKASH TOWER**

Brand : Samsung  
Address: Gulshan-2, Dhaka



**NOOR MANSON SHOPPING COMPLEX**

Brand : Samsung  
Address: Newmarket, Dhaka



**LALON UNIVERSITY**

Brand : Samsung  
Address: Kushtia Sador, Kushtia



**UNIMAS SPORTSWEAR LIMITED**

Brand : Samsung  
Address: Ashulia, Dhaka



**TK GROUP**

Brand : Samsung  
Address: Tk bhaban, Kawranbazar, Dhaka

## SOME OF OUR PROJECTS



### DEBONIR GROUP

Brand : Samsung  
Address: Ashulia, Savar, Dhaka



### AR CORNER

Brand : Samsung  
Address: Hamid Road, Pabna



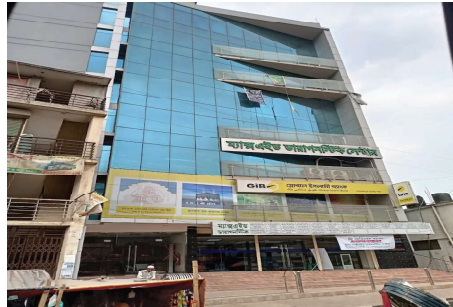
### UCC

Brand : Samsung  
Address: Akram Serenity, New Elephant



### PABNA UNIVERSITY OF SCIENCE

Brand : Samsung  
Address: Pabna Sadar, Pabna



### MAXAID DIAGNOSTIC

Brand : Samsung  
Address: Bosila Road, Mohammadpur



### PRINCIPAL GROUP

Brand : Samsung  
Address: Sonargaon, Narayangonj



### SPECTRUM CONCERTS LTD.

Brand : Samsung  
Address: Kazi Nazrul Islam, Tejgaon



### AL-KHALIFA RESTRURANT & CONVENTION HALL

Brand : Samsung  
Address: Shayestaganj, Habiganj, Sylhet



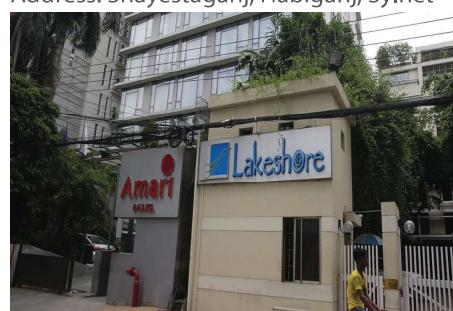
### CSI ENGINEERING.

Brand : Samsung  
Address: Rajuk Uttara Apartment Project



### PHP GROUP

Brand : Samsung  
Address: Banani, Dhaka



### HOTEL LAKESHORE

Brand : Samsung  
Address: Gulshan-2, Dhaka



### NASCO ENGINEERING PRIVATE LTD.


Brand : Samsung  
Address: Rajuk Uttara Apartment Project



## OFFICE ADDRESS

-  56/1, Baitul View Tower (Level 11)  
Purana Paltan, Dhaka
-  + 02-47122450
-  [info@signtechlimited](mailto:info@signtechlimited)
-  [www.signtechlimited](http://www.signtechlimited)

## SERVICE CENTER & WAREHOUSE

-  Bhuighor, Fatullah,  
Narayangonj